



Liverpool PCB for Particulars TCT setup

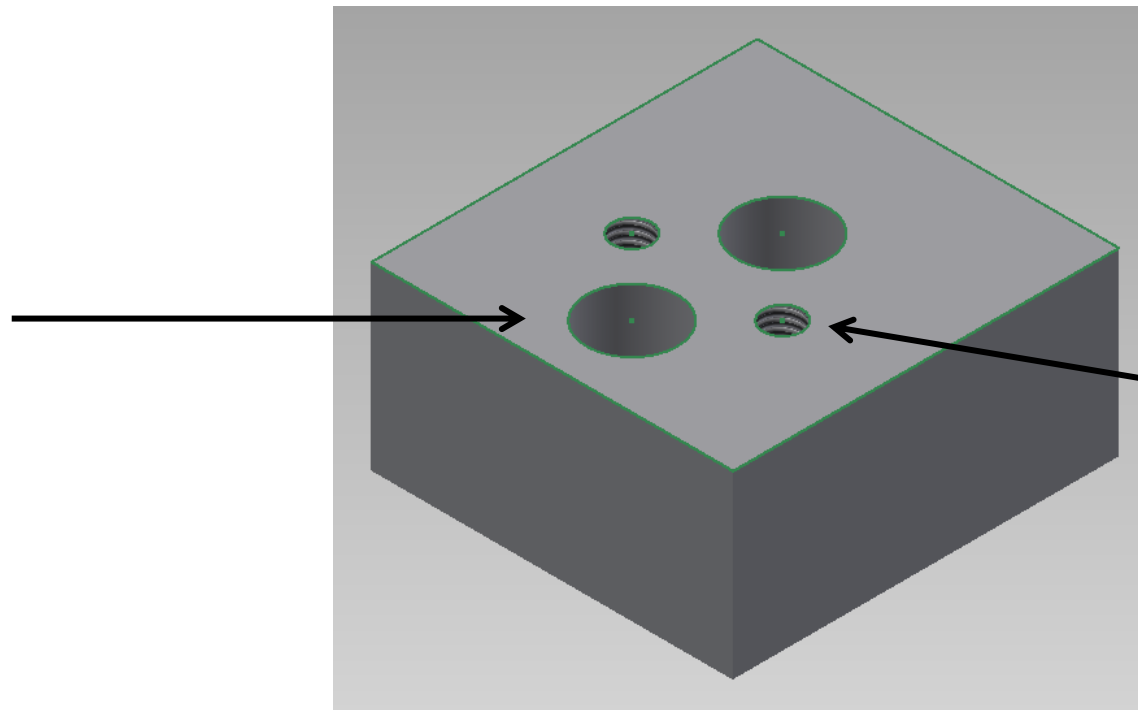
Sven Wonsak



- To use the Particulars TCT system for edge-TCT measurements a PCB was designed.
- To get the laser to the sensor edge, the z motion stage has to be rotated by 90°
 - If the stage is at it's lowest position it would collide with the x stage (below) therefore a distance block was designed

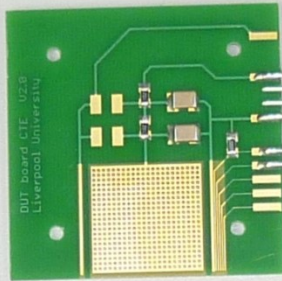


Holes for
screws to
attach to x-
stage

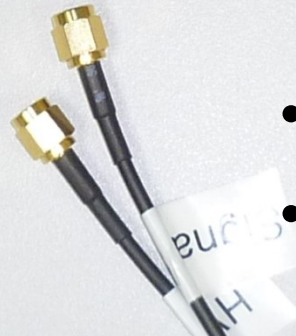


M4 thread to
screw z-stage

- Distance block with 4 holes
 - Two with threads (M4) to screw the z-stage
 - Two holes for the screws to attach the block to the x-stage
- Dimensioned drawing in separate file



- HV filter on the PCB
 - 1k Ω resistors (anti sulphur)
 - 10nF, 2kV capacitors
- Molex connectors
- 0 Ω resistor to connect GND from HV with shielding GND from signal





Red bonds: GND
Yellow bond: signal

GND
GND
Signal

