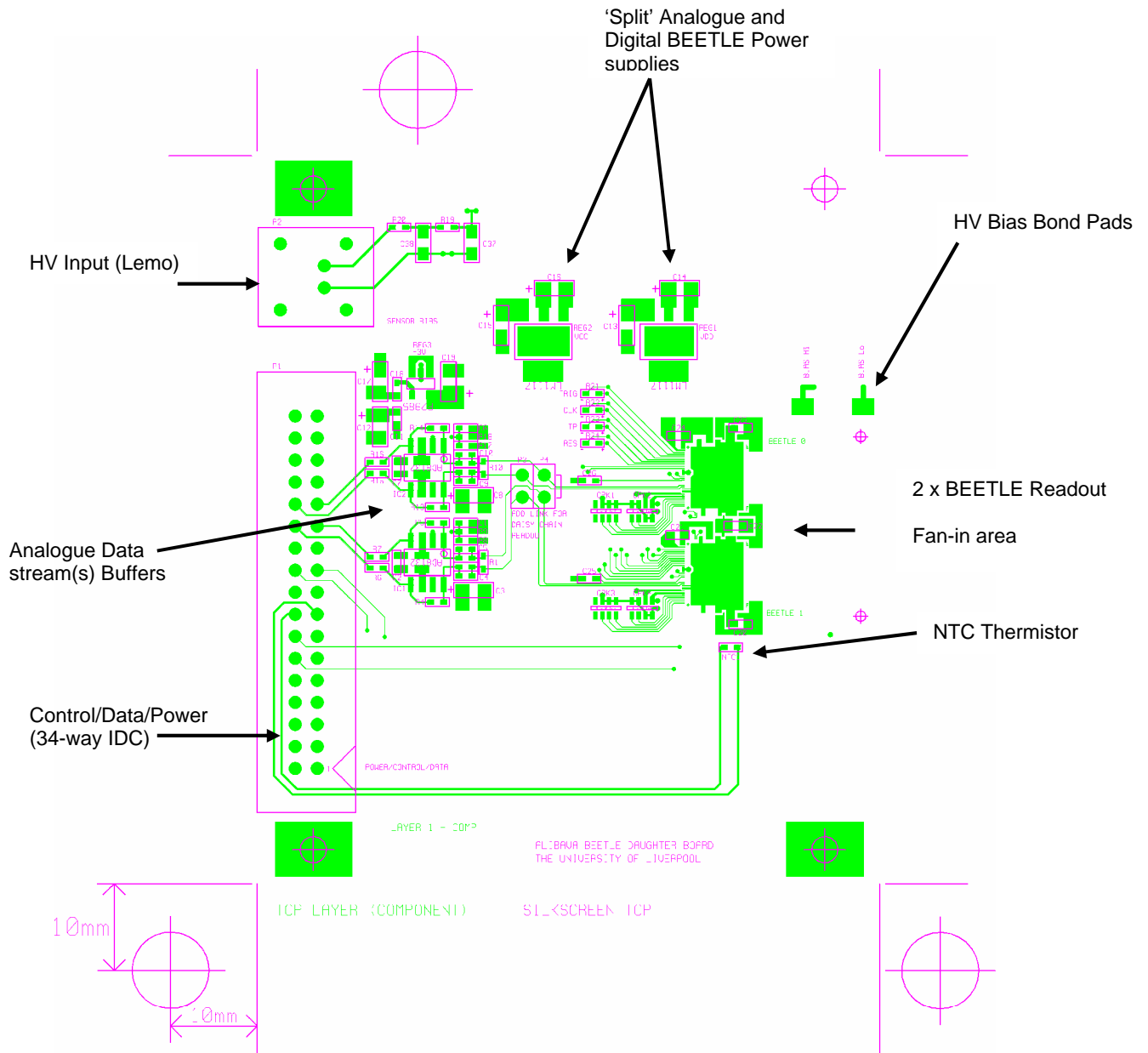


# ALIBAVA – Daughter Board

Find below a provisional layout of the Daughter Board for the “ALIBAVA” readout system:



The main features of the board are as follows:

- 4 Layer PCB, the PCB stack-up (layer ordering, top-down) is:
  1. Component/Signal
  2. Common Ground Plane
  3. Power Plane (mixed analogue & digital).
  4. Solder/Signal.

- Two BEETLE readout, either as daisy-chained or parallel readout.
- Regulated power supplies:
  1. 2.5V Digital (VDD) for BEETLE.
  2. 2.5V Analogue (VCC) for BEETLE.
  3. 3.0V Analogue for the data buffers.
- All control, data and power connections are via a 34-way male IDC connector. The cable connection should be made using 'Twist & Flat' ribbon cable – to maintain the integrity of the balanced connections to/from the mother-board.
- NTC thermistor temperature monitoring.